

# Mulkear River Catchment Project

## Mulkear EIP



**Mulkear EIP**

Pallasgreen, Co. Limerick,  
Ireland, V94 CR33.

083 1044609

[www.mulkeareip.com](http://www.mulkeareip.com)





# Overview

The Mulkear EIP is a five year project (2019-2023), it is co-funded by the Department of Agriculture, Food and the Marine and the EU and has a budget of €1.17 million. The project will assist farmers to address the pressures from agriculture which are impacting water quality throughout Ireland. This will be done via a partnership approach across the wider Mulkear Catchment (Limerick & Tipperary) supported by a range of project partners. The Mulkear EIP offers a new approach to address water quality concerns by developing catchment sensitive farming practises. The project will support local farmers to remain farming while bringing about catchment scale improvements in water quality. It is an entirely voluntary programme. It offers an opportunity to local farmers to deliver a suite of mitigation measures on their farms to support farm sustainability, water quality and biodiversity.



# Objectives

This project aims to support local farmers to remain farming while bring about catchment scale improvement in water quality in the Mulkear catchment.

The key objectives are to:

- Develop a collaborative approach with all relevant stakeholders to identify water quality concerns in the catchment.
- Undertake detailed whole Farm Assessments for all participating farmers to identify water quality risks on the farm.
- Implement on-farm mitigation measures designed to improve water quality and restore habitats with co-benefits for farm biodiversity.
- Devise a results-based payment scheme for farmers.
- Deliver catchment sensitive farming discussion groups with participating farmers.
- Communicate with the wider Mulkear community via a community based outreach programme.

# Eligibility Criteria

To be eligible to apply to join the Mulkear EIP project participant farmers must:

- Be actively farming at least one land parcel contiguous to the watercourses or tributaries in the Mulkear catchment.
- Have an active herd number
- Be 18 years of age or over in the year submitting an Expression of Interest form.
- Must have submitted an annual application under the Basic Payment Scheme, including the declaration of all lands farmed.
- Participation in the Mulkear EIP project is voluntary.

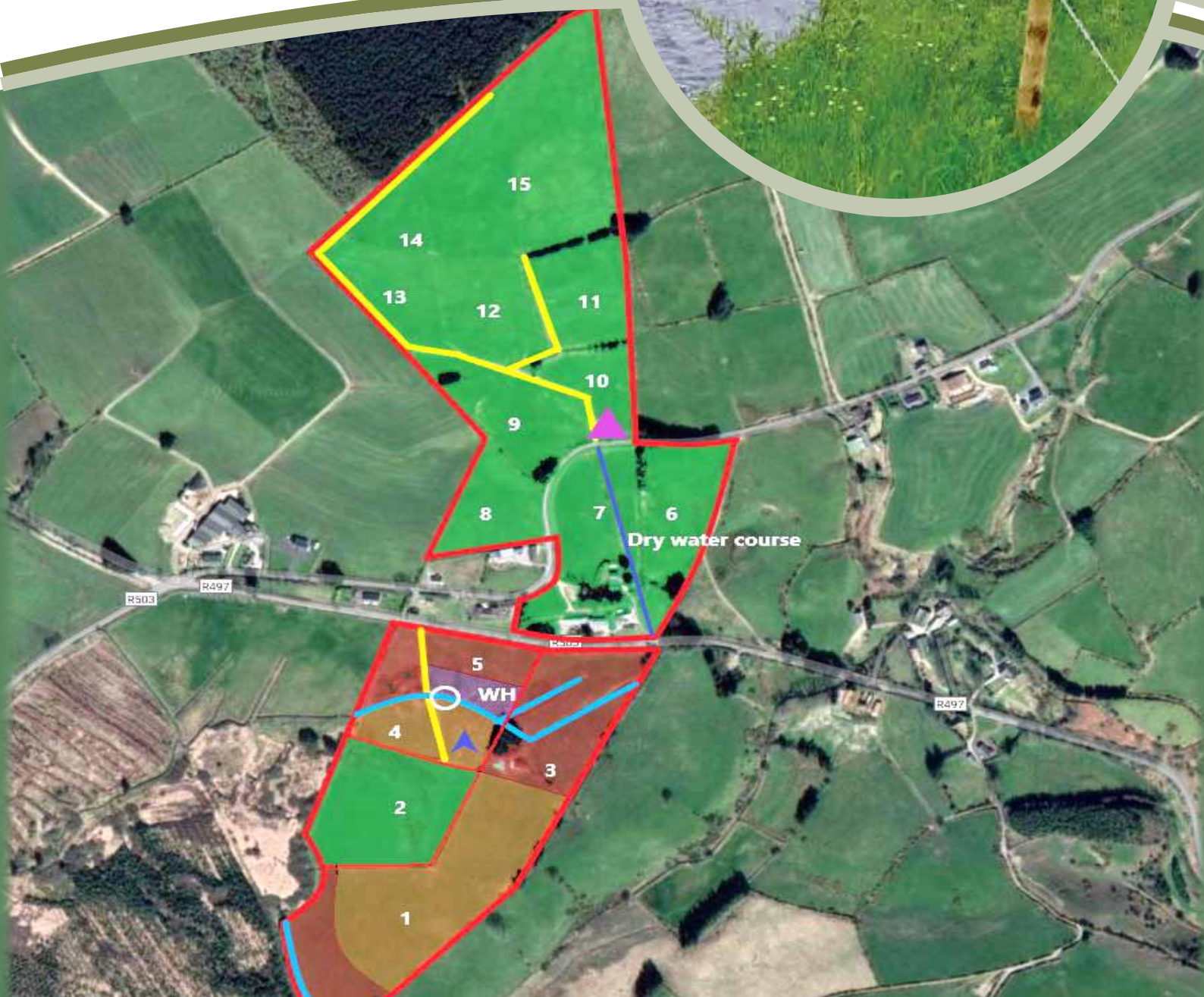




# Farm Plan

On entry to the Mulkear EIP project, the Project Team will supply each participant farmer with an individual Farm Plan. The Farm Plan will include specific management recommendations relevant to the farm which will improve water quality, instream habitat and riparian management. The Farm Plan will provide summary details of the farm enterprise and will include the following as a minimum:

- List of mitigation measures to be undertaken
- Associated maps
- A works schedule
- Payment details





# Example Mitigation Measures

Participating farmers will select a number of measures designed to improve water quality and will be financially rewarded to reflect the success of their actions.



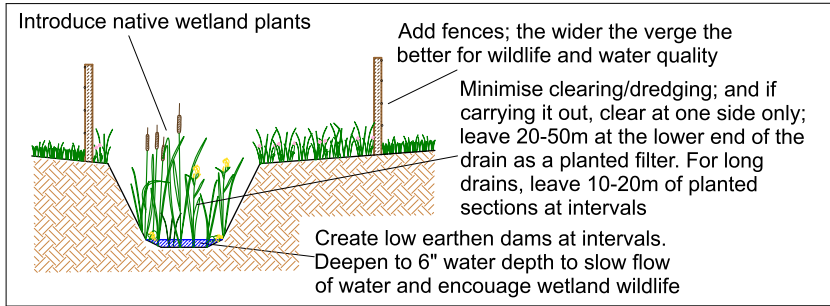
# Mitigation Measures

	MEASURES	FARM REQUIREMENTS	UNIT PAYMENT
Reduce Farmyard Runoff Measures	Rainwater harvesting	3,000l oval tank	€1,165
	Gutters and downpipes instillation	Max 40m	€25/m
	Slit traps/Interceptor drains #	1 per farm	€2,000/farm
Nutrient Management Measures	Low emission slurry spreading	Max 270m <sup>3</sup>	€3/m <sup>3</sup>
	Inclusion of clover	Min 2 ha - Max 6ha	€350/ha
	Application of lime	Max 40 tons	€25/ton
Farmland Enhancement Measures	Earth bunding in drains #	Max 500m	€3/m
	Leaky log dams/ brash dams #	Max 500m	€3/m
	In-channel settlement pond #	1 pond per farm	€2,000/farm
	Infield mounds #	Max 300m	€5/m
Farm Roadways Measures	Roadway soakage areas	Max 500m	€6/m
	Settlement ponds #	1 pond per farm	€2,000/farm
	Mounding	Max 500m	€3/m
	Cross fall orientation	Max 400m	€8/m
Grazing Infrastructure Measures	Multiple access points	Max 500m	€3/m
	Paddock grazing	Total grazing block	€1,500/farm
	Water access/relocation	Max 4 drinking points/farm	€200/trough
	Protecting water courses	Max 500m	€2/m
	Pasture pump	Max 2 per farm	€300/pump
Habitat Retention Measures	Support out-winter grazing #	Rough grazing only	€2,400/farm
	Riparian margins #	Min 2m - Max 5m	€3/2m - €6/5m
	Pond and wetland - creation or retention #	1 per farm	€2,400/farm
	Create instream habitats #	1 per farm	€2,400/farm
Discussion Groups	4 per year		€500/year

# Subject to bonus payments

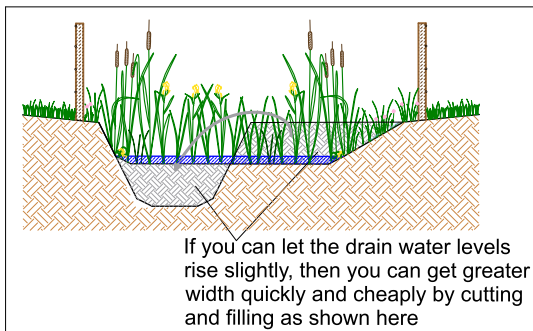
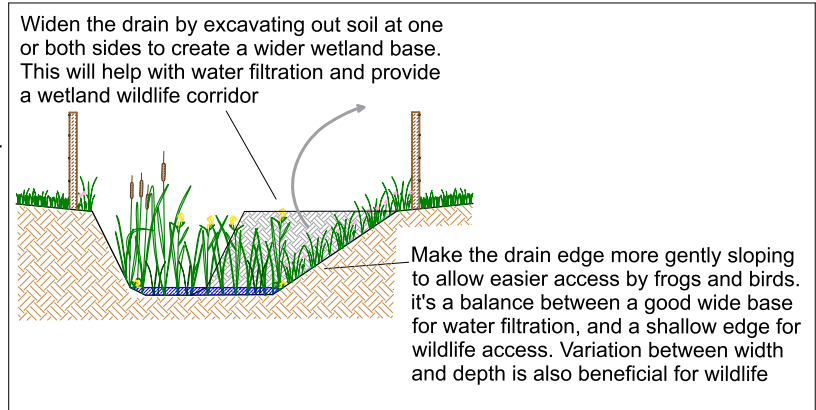


# Natural Silt Traps/Buffer Zones

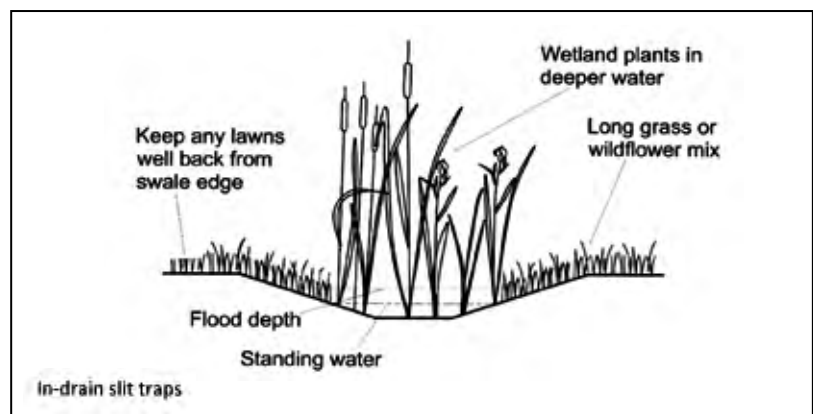


Measure 1:  
Fencing.  
Low dams.  
Planting.  
Leaving filter sections.

Measure 2:  
Widen drain.  
Soften edge slope.



Measure 3:  
Gain further width by raising the drain base.  
Note, a wooded buffer zone of native trees may be added to clean up ground water, provide wildlife habitat and a firewood or timber crop.

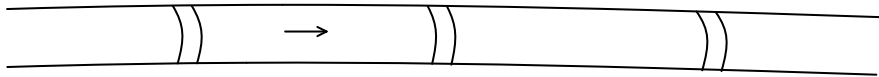


Silt Trap for field runoff filtration, in the form of a Contour Swale and Mound.  
(Plant with any deciduous trees for greater infiltration and habitat value.)





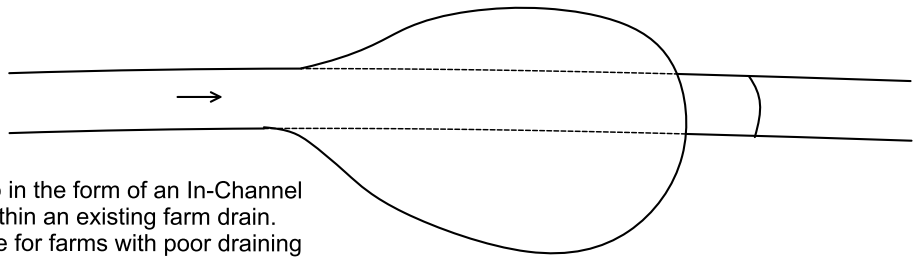
# In-Channel Filter Buffers for silt settlement in farm drains



Silt Trap using Earth Bunding in Drains to form an In-Channel Wetland Filter (Build low earthen dams at intervals to create a continuous length of shallow standing water. Widen for better filtration.)

Leaky Log Dams may be used where flows are prone to excessive volumes and/or velocities.

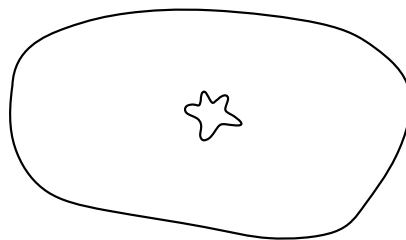
Brash Dams or Straw Bale Dams may be used to balance the flows from larger catchments while also providing filtration during lower flows.



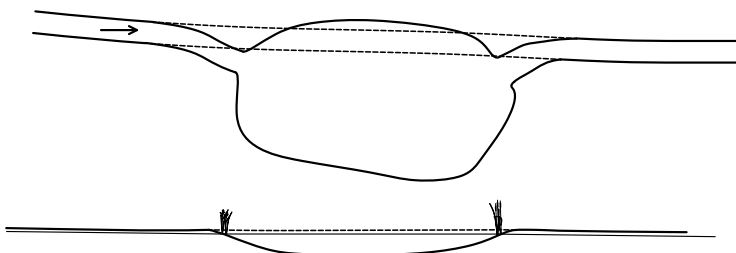
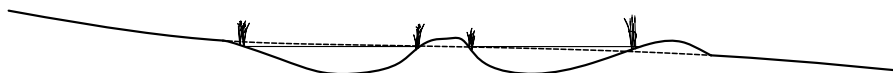
Silt Trap in the form of an In-Channel Pond within an existing farm drain. (Suitable for farms with poor draining soils. The larger the pond the greater the uptake of silt, N and P. Plant with wetland plants for greater filtration. Make edges not steeper than 1:3 for habitat value and safety.)

## Farm Ponds for clean water runoff

*(or for use as settlement ponds if fed from the fields directly)*



Farm Pond with island for habitat on farms with heavy clay soils or high groundwater. (Use to take clean roof runoff. Note shaped edges of island as shelter for birds. Keep edge slopes shallow for greater habitat value and safety.)



In-Channel Farm Pond in clean farm drains for habitat enhancement, additional silt trap function and/or nutrient capture



**FH Wetland Systems Ltd.**

30 Woodlawn, Lahinch Rd., Ennis, Co. Clare  
[www.wetlandsystems.ie](http://www.wetlandsystems.ie)  
 Tel. 065-6797355  
 e-mail: [reeds@wetlandsystems.ie](mailto:reeds@wetlandsystems.ie)



## Discussion Groups

All participating farmers must join a Discussion Group which is a mandatory requirement. These discussion meetings will be approximately 1 hour in duration and will be of a very practical nature. It is envisaged that these meetings will take place on individual farms. The named participant on the contract must attend, however, in exceptional circumstances a representative may attend with prior approval from the project team. Five meetings will be offered each year and a minimum of four must be attended.



## Results Based Payments

Farmer payments will be paid directly to the farmer's bank account by the project. The regulations that govern the operation of the Mulkear EIP project do not permit direct area payments in the same manner as more traditional Agri-environmental schemes. Project participants have the opportunity of two payment strands based on the mitigation measures selected and a supporting result based measures option. Verification checks will be carried out at least annually at any time during the year by the project team. With respects to results based payments any obvious damaging activities recorded on that date of the visit anywhere will result in a reduced payment.









## **Mulkear EIP**

Pallasgreen, Co. Limerick,  
Ireland, V94 CR33.

Tel: 083 1044609

[www.mulkeareip.com](http://www.mulkeareip.com)



Ireland's European Structural and  
Investment Funds Programmes  
2014-2020  
Co-funded by the Irish Government  
and the European Union



The European Agricultural Fund  
for Rural Development: Europe  
investing in rural areas



An Roinn Talmhaíochta,  
Bia agus Mara  
Department of Agriculture,  
Food and the Marine